



---

May 2026

---

## PRESIDENT'S LETTER

Greetings EWI Friends,

What an incredible week for our chapter! Our ASIST Scholarship Banquet on Wednesday was truly a beautiful and inspiring evening—without a doubt my favorite night of the year. It was wonderful to celebrate our remarkable scholarship recipients and witness firsthand the impact of our collective efforts. It was especially meaningful to meet our recipients and their families and guests—such an emotional and memorable evening for all.

A heartfelt thank you goes to our dedicated ASIST Committee: Diana Busche (Chair), Patty Bain, Kristin Gochenour, Sharon Mize, Melissa Swan, Pam Yenke, and Suzanne Waltermeyer, for the countless hours and attention to detail they poured into creating such a special experience. Your hard work truly shone throughout the evening. I would also like to extend my sincere appreciation to our three judges who thoughtfully reviewed the applications—their time and care made a meaningful difference in selecting our outstanding recipients.

As we shift into the next exciting chapter of our year, we are wrapping up our Reading Rally. Thank you to everyone who contributed book donations! A special thank you to Sharon Mize for coordinating the collection efforts. Sharon and I will be delivering the books to Micah House next week. This marks our third year partnering with Micah House, and it continues to be such a rewarding and impactful collaboration. Looking ahead, I hope you'll join us for our June 10th Thrive at Five event at Barroco Wine Bar, where we'll enjoy creativity and connection while making bracelets together—sure to be a fun and relaxing evening!

I also encourage everyone to consider attending the EWI Leadership Caucus and Annual Meeting (LCAM) in Mobile, Alabama. Omaha always has a strong showing, and I would love to see that continue this year. LCAM is an incredibly valuable and rewarding experience that renews me both professionally and personally—each time I leave, I feel energized, inspired, and more connected to the heart of EWI through friendships old and new.

Registration is now open, and full details are available at [EWIconnect.com](http://EWIconnect.com). To support attendance, the Board will be offering one scholarship to cover the registration fee. The application is included in this email and is due back by June 22.

Finally, I look forward to seeing everyone on June 24th at our next Chapter Meeting at Access Bank, where we will hear an engaging presentation on AI—sure to be both informative and timely.

Thank you all for your continued engagement, generosity, and commitment to making our chapter so special.

Warm regards,

Susan Hussey  
2025-2026 President, EWI of Omaha



President

Susan Hussey – Dvorak Law Group  
shussey@ddlawgroup.com

President-Elect

Amy Ayer – Dvorak Law Group  
aayer@ddlawgroup.com

Secretary

Pam Yenke – Access Bank  
pyenke@accessbank.com

Treasurer

Angie Peters – Bankers Trust Company  
apeters@bankerstrust.com

Sergeant-At-Arms

Alisha Nash – Pinnacle Bank  
alisha.nash@pinnbank.com

Retention & Recruitment Director

Kristen Long – Talking Rain  
klong@talkingrain.com

Program Director

Natalie Kotrc – Elegant Edge Events  
natalie.kotrc@yahoo.com

Ways & Means Director

Amy Bodenner – Sunflower Advisors  
amy@sunfloweradvisors.com

Communications Director

Lindsay Christiansen – Green Plains Inc.  
lindsay.christiansen@gpreinc.com

Director At-Large

Sharon Mize – Suzanne & Walter Scott Foundation  
smize@swscottfdn.org

Board Advisor

Molly Murphy – Omaha Steaks  
mollym@omahasteaks.com

Parliamentarian

Hilary Allen – Bland & Associates, PC  
hallen@blandgovconsulting.com

# Chapter News

## NEW MEMBERS

WELCOME TO  
EWI OF OMAHA



Omaha ewi Sara Freeman

Representing



WELCOME BACK  
TO EWI OF OMAHA



HYATT® Trish Bauermeister



WELCOME TO  
EWI OF OMAHA



Omaha ewi Jody DuRee

Representing



## UPCOMING EVENTS

09

**Board Meeting**

5:30pm

10

**Thrive @ 5**

5:30pm - Barrocco Bar

24


**Chapter Meeting**

5:30pm - Access Bank

Follow Us On  
**SOCIAL MEDIA**

[www.facebook.com/ewiomaha](http://www.facebook.com/ewiomaha)  
[www.instagram.com/ewiomaha](http://www.instagram.com/ewiomaha)  
[www.linkedin.com/company/ewi-of-omaha](http://www.linkedin.com/company/ewi-of-omaha)

## BIRTHDAYS & CHAPTER MEETING



CONNECTIONS | CAREERS | COMMUNITY

### June Chapter Meeting

Wednesday June 24, 2026	5:30 Registration 6:00 Intros & Dinner 6:30 Program
Access Bank 8710 West Dodge Rd. Omaha, NE 68114	

Join us for a discussion on Generative AI and what it means for today's workplace. Kathy Headley, SVP Director of Organizational Experience at [ACCESSbank](#), will explore practical ways we can use AI to work smarter, communicate more effectively, and save time - while also covering business impact, responsible use, and prompting techniques. Attendees will leave with real-world examples, actionable ideas, and a glimpse into how AI is shaping the future of work

\$30 per person. RSVP by June 17th!

# CHAPTER EVENTS

## APRIL CHAPTER MEETING



Our very own Sandy Spady encouraged us to live as our most authentic selves and to embrace our strengths – we are stronger than we think and we are even stronger together! Thank you to Dvorak Law for hosting!

## ASIST VINO TASTING FUNDRAISER



Another great wine tasting event was held at VINO MAS on May 7<sup>th</sup>. Thank you to all of those who were able to attend or contributed!

**THRIVE @ FIVE**  
*An EWI Omaha Social Event*

**When:** Wednesday, June 10th, beginning at 5:30 PM

**Where:** Barrocco Wine Bar & Craft Cocktails  
Semiprivate Area ~ 2935 S 108th  
East side of 108th, NOT in the Rockbrook Village area

Food and beverage purchased on your own. This is a great time to connect with fellow membership as well as guests in a setting outside of our standard EWI meetings.

♦ CHAT! ♦ CHEERS! ♦ ENJOY! ♦

*Special Feature:*  
*Denise Beideck* will join us offering intentional bracelet making centered around creativity, reflection & meaningful connection

- ♦ Held & Restored
- ♦ Letting Go
- ♦ New Beginnings

Thoughtfully curated beads & crystals provided to encourage intention-setting & self-reflection.  
No experience needed – simply come as you are.

Limited selection of completed intention bracelets also available for purchase.

Cost: \$20 for making or buying a bracelet

# ASIST BANQUET

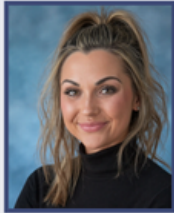
## 2026 ASIST SCHOLARSHIP RECIPIENTS



Alicia James



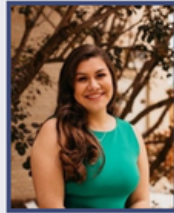
Alayshia White



Baileigh Westbrook



Danni Christensen



Karen Amaya-Campos



Another beautiful evening of celebrating this year's amazing ASIST and Darlis Vauble Scholarship winners is in the books, and we couldn't be prouder! Thank you to our judges for their dedication to our cause, our wonderful Guest Speaker, Amy Freshman for her inspirational story, the ASIST Committee for creating such a welcoming environment for our guests and thank you to Marriott at the Capitol District for hosting!

## ASIST WINNERS



**Baileigh Westbrook**

Baileigh attends Nebraska Methodist College, pursuing a BS in Nursing. While balancing the responsibilities of being a single mother and caregiver, her journey has been shaped by overcoming significant personal challenges. Rather than allowing those experiences to define her, they strengthened her determination to create a better future for herself and her daughter.

Baileigh's current role is aiding a paraplegic client with activities of daily living. Through this experience, she has developed compassion, patience, and a strong sense of responsibility.

Baileigh's goals are deeply rooted in both purpose and family. Motivated by her dedication to helping others and her desire to give her daughter the best life possible, Baileigh remains focused on growth, stability, and building the future they deserve.



**Dana Christensen**

"Danni" attends College of Saint Mary, pursuing a degree in Nursing. As a mother of two, one with special needs, Danni understands firsthand the importance of a strong, supportive community.

Danni plans to complete SANE (Sexual Assault Nurse Examiner) training and plans to continue her education and become an Advanced Practice Registered Nurse, specializing in Family Medicine.

Danni also volunteers with the Alzheimer's Association, and as a peer tutor at the College. She is dedicated to making a lasting impact in the lives of the families she serves.



**Alicia James**

Alicia attends MCC, pursuing an associate's degree in accounting. As a dedicated mother of two teenagers, she has spent years prioritizing her family and feels it is now the right time to invest in her own future and professional growth.

Alicia works at King Middle School. Her firsthand experience has strengthened her skills and confirmed her decision to pursue accounting as a career.

Alicia is motivated by a desire to give back to her community. She recognizes an increasing need for professionals who can bridge language barriers in financial services.

Her long-term goal is to build a stable future for herself and her family while continuing to make a meaningful, positive impact in her community.



**Alayshia White**

Alayshia attends the College of Saint Mary, pursuing a degree in Business and Health Administration and plans to go on to complete her BS in Nursing. She is a single mother who is passionate about improving healthcare equity and advocating for underserved communities. Her passion for healthcare was shaped through personal adversity and resilience after experiencing a traumatic assault during her first semester of college. The experience left her feeling uncertain about her future, but it gave her a renewed sense of purpose to continue her education.

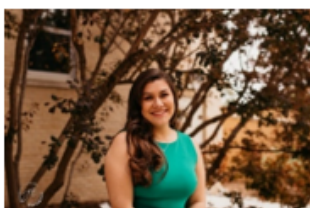
As a single mother, her daughter is her greatest inspiration and the driving force behind everything she does. Alayshia is committed to turning her pain into purpose by creating positive change in healthcare and encouraging other young women to pursue their goals.

Corporate ASIST Scholarship Nominee

## DARLIS VAUBLE SCHOLARSHIP WINNER



**Karen Amaya-Campos**



Karen attends College of Saint Mary, pursuing a BS in Nursing. She is a first-time mother who is passionate about providing patient-centered care and advocate for individuals from diverse backgrounds. As a bilingual caregiver, she wants to bridge communication barriers and create a more supportive environment for patients and families.

# Regional News



EWI - Corpus Christi is thrilled to welcome you to TEXOMA 2026 this summer!

This year, we will be  Rising with the Tide: Leading, Connecting, Advancing  as we come together for two days of learning, inspiration, and connection. We are preparing a dynamic program featuring illuminating speakers, networking opportunities, and a fun Friday evening experience you won't want to miss.

## TEXOMA Conference:

[Registration Page](#)

Friday, July 31st & Saturday, August 1st

Venue: Omni Corpus Christi Hotel

• Please Join Us! Chapter Meeting & Dinner

Thursday, July 30th at 6:00 PM

Venue: Omni Corpus Christi Hotel

### Registration Details:

- Early Registration (by July 1st): \$250
- Standard Registration: \$300
- Chapter Meeting & Dinner: \$50
  - add-on available through the RSVP link

Early registration is now open, and we encourage you to secure your spot and take advantage of the discount.

**We're excited to welcome you to Corpus Christi, where we will rise with the tide as we connect and advance together.**

### Hotel Information & Links:

Omni Corpus Christi Hotel:

900 North Shoreline Blvd., Corpus Christi, Texas 78401

[Reservation Link](#)

Room Block Name: EWI TEXOMA

Dates of Stay: 7/30-8/2/26

Group Rate: \$179

Overnight Garage Self-Parking: \$10 per vehicle, per night

Central Reservations Line: 1-800-843-6664 &

Complimentary Airport Shuttle (to/from): 361-887-1600

Holiday Inn Corpus Christi Downtown Marina

707 North Shoreline Blvd., Corpus Christi, Texas 78401

Residence Inn by Marriott Corpus Christi Downtown

309 S. Shoreline Blvd., Corpus Christi, Texas 78401

Residence Inn Corpus Christi Downtown | Long-Stay Hotel  
with In-room Kitchens

# Corporate News

**JUNE**

## PROFESSIONAL DEVELOPMENT WEBINAR



**Stretch to Wynn: Strengthening Your Personal Power for Professional Impact**

Wednesday, June 24, 2026 | 12:00 PM CT

DeShawn Wynn, Success Architect



We value the support and engagement of our members and want to be transparent about an upcoming change. Over the past several years, the costs of hosting LCAM have risen, including hotel rates, food and beverage, materials, and speaker fees. While registration fees have not increased in many years, conference expenses have outpaced revenue from registrations, sponsorships, and donations. To responsibly support the full cost of delivering LCAM, we are implementing a modest registration fee increase for 2026.

### CONFERENCE REGISTRATION:

\$950 - Early Bird, ends June 30

\$1,000 - Regular Registration

\$1,250 - Non-Member Registration

### REGISTRATION + LEADERSHIP CAUCUS:

\$1,100 - Early Bird, ends June 30

\$1,150 - Regular Registration



## Member Firms and Representatives

A View Venues – Courtney O'Brien  
Access Bank – Pam Yenko  
Agile Mindfulness – Nora Plambeck  
Bankers Trust Company – Angie Peters  
Bland & Associates, PC – Hilary Allen, Diana Busche  
Blue Cross Blue Shield, Nebraska - Open  
Borsheims – Chris Buckingham  
Burlington Capital – Jordan Stocking  
Doubletree Downtown Omaha – Sara Freeman  
Dvorak Law Group – Amy Ayer, Susan Hussey  
Elegant Edge Events – Natalie Kotrc  
Green Plains Inc. – Lindsay Christiansen  
HDR – Open  
Hemphill Search Group – Susie Hemphill  
Hyatt Omaha – Trish Bauermeister  
Lund Company, The – Jessica Diamond, Jonna Radtke  
Marriott Downtown at the Capitol District – Maggie Rasmussen  
McFarlin & Brokke, P.C. – Melissa Travis  
Midlands Business Journal – Andee Hoig  
MK Swan, Inc. – Melissa Swan  
Omaha Steaks – Kristin Gochenour, Molly Murphy, Stephanie Skavdahl

Outlook Collaborative – Lori Mitera, Susanne Waltermeyer  
Partnership 4 Kids – Cheryl Murray-Kerst  
Party Bar, The – Jody Carper  
Pinnacle Bank – Alisha Nash  
Power UP Leadership Coaching – Sandy Spady  
Signature Performance – Open  
Standard Heating & Air – Jody DuRee  
Stratum Live Event & Productions – Tori Anderson  
Sunflower Advisors – Amy Bodenner  
Suzanne & Walter Scott Foundation – Sharon Mize  
Talking Rain – Kristen Long  
Thrivent – Amber Stroh  
United Republic Bank – Anne Riley  
Venue 1883 – Brenda Ulven

Individual Members – Cindy Brickey, Reem Rawashdeh

Sustaining Member - Stacie Robertson, Jane Heath

Life Members – Jane Allamong, Carol Armstrong, Patty Bain, Cathy Bodammer, Sue Burkhard, Loy Flanagan, Lenore Honke, Sally Komrofske, Cheryl McCall, Patty McElderry, Ellie Morrow, Janet Schawang, Ruth Utman